

How to install the ASG – SMD Mosfet unit



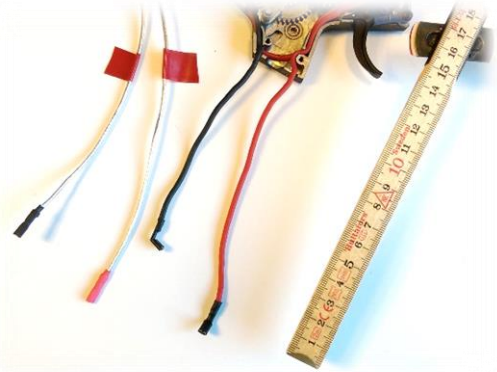
Can be used with any AEG and combined with the extremely small size the installing possibilities are endless. Following are a couple of samples and tips. + + + + +

Installing in a version 2. Gearbox:

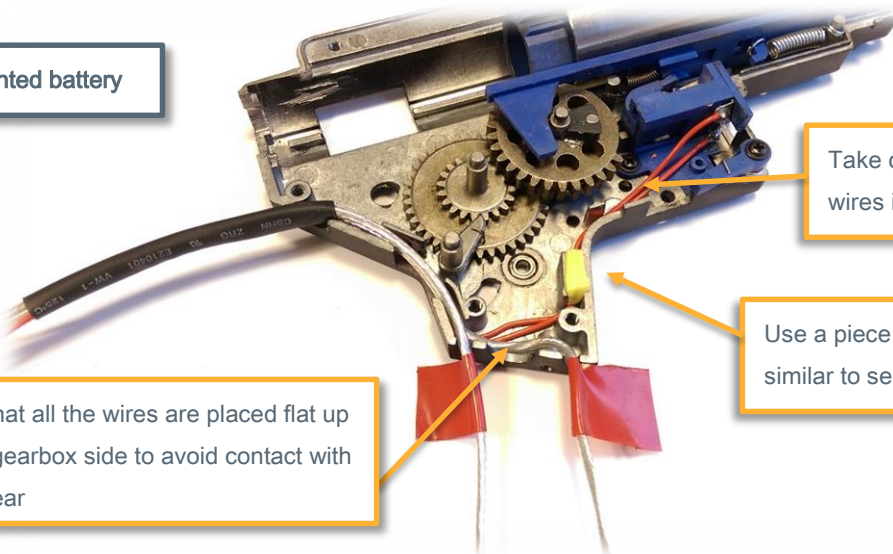
Before removing, the original wires mark the length of the motor wires – here done with insulation tape.

With the original wires removed, you can now install the SMD Mosfet unit. The marked wires makes it easy to get the correct length to the motor. It is vital to make sure that the wires are placed securely against the gearbox side where they pass close to the motor pinion. Also care should be taken not to place the switch wire in front of the hole for the receiver pin (used on M15 models).

When installing for stock mounted battery, the switch wires should be secured, with a small piece of foam or similar (yellow). A little superglue could be used for added hold if needed.



Stock mounted battery

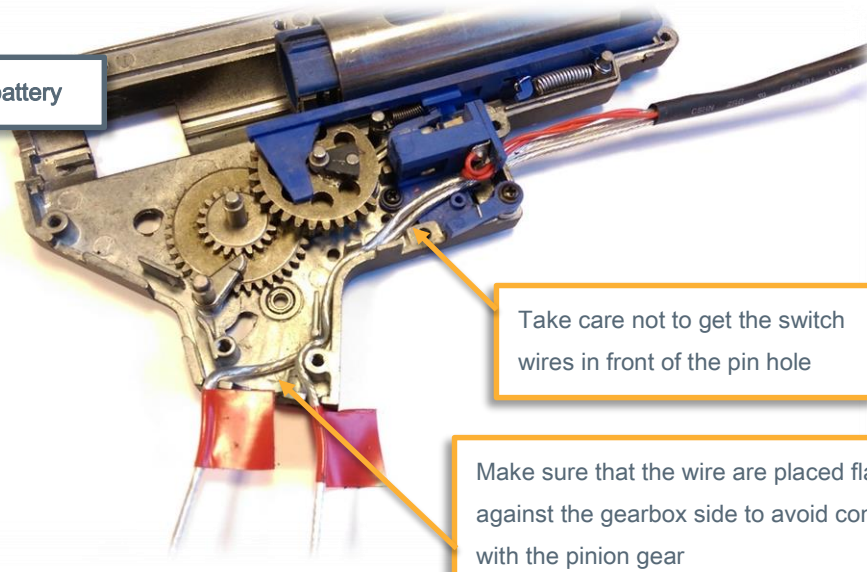


Take care not to get the switch wires in front of the pin hole

Use a piece of foam/rubber or similar to secure the switch wires

Make sure that all the wires are placed flat up against the gearbox side to avoid contact with the pinion gear

Front grip mounted battery



Take care not to get the switch wires in front of the pin hole

Make sure that the wire are placed flat up against the gearbox side to avoid contact with the pinion gear

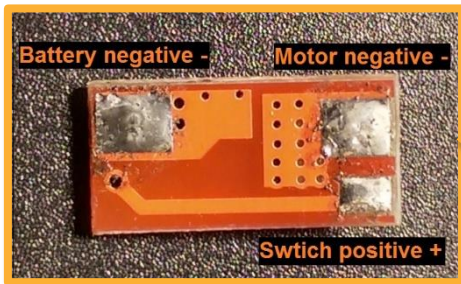
How to install the ASG – SMD Mosfet unit

Can be used with any AEG and combined with the extremely small size the installing possibilities are endless. Following are a couple of samples and tips. + + + + +

Installing in a version 2. Gearbox – Using AEG's original wires:

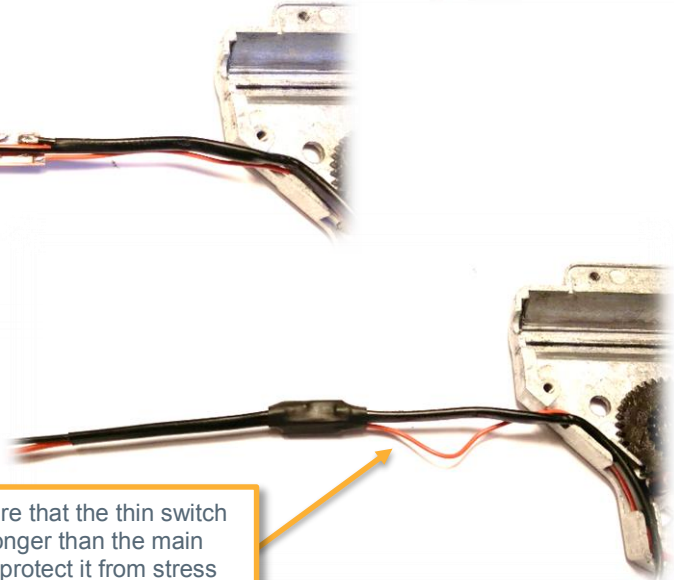
It is also possible to use the AEG's original wires if wanted. Cut away the heat shrink tubing from the Mosfet unit (a spare is supplied) and de-solder the wires directly from the circuit board. Take care not to apply excessive heat when soldering on the unit.

Before completely disassembling your AEG, find a suitable place for the unit and mark it. In this sample, we want the unit to be placed in the bottom of the stock tube.



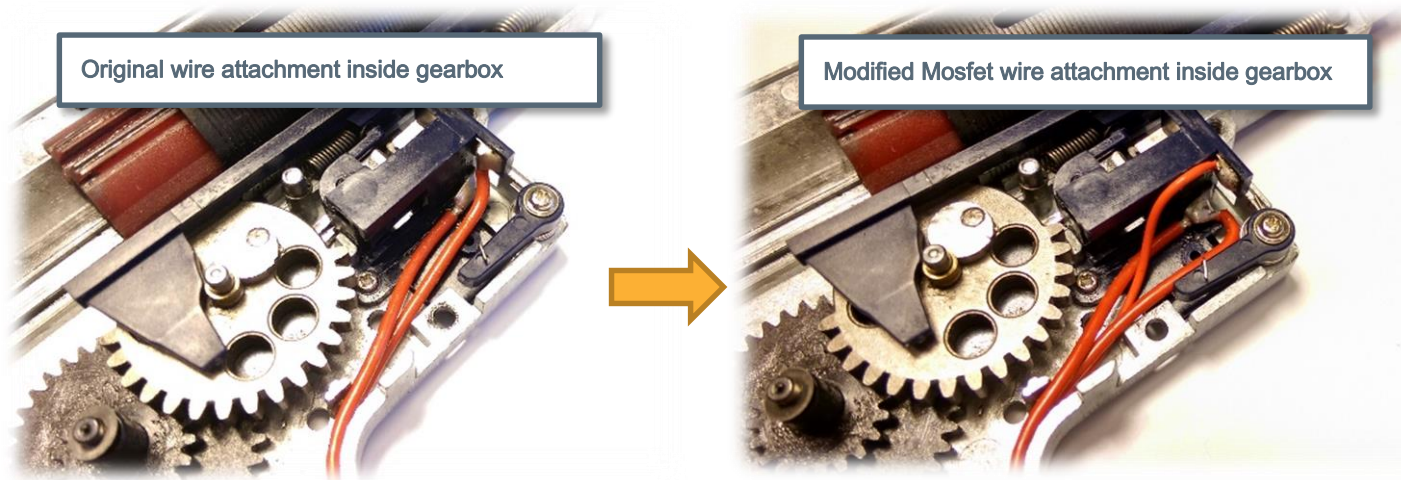
It is the negative (often black) wire, which shall be soldered to the Mosfet unit. Re-use a piece of the thin switch wire supplied with the unit for the trigger. Positive (often red) will go directly to the motor.

Make sure that the thin switch wire is longer than the main wires to protect it from stress



Original wire attachment inside gearbox

Modified Mosfet wire attachment inside gearbox



Connect the two original wire directly to each other by soldering them on the one switch connector. Attach the thin switch wire to the other connector. Make sure not to get the wires in front of the pin hole.

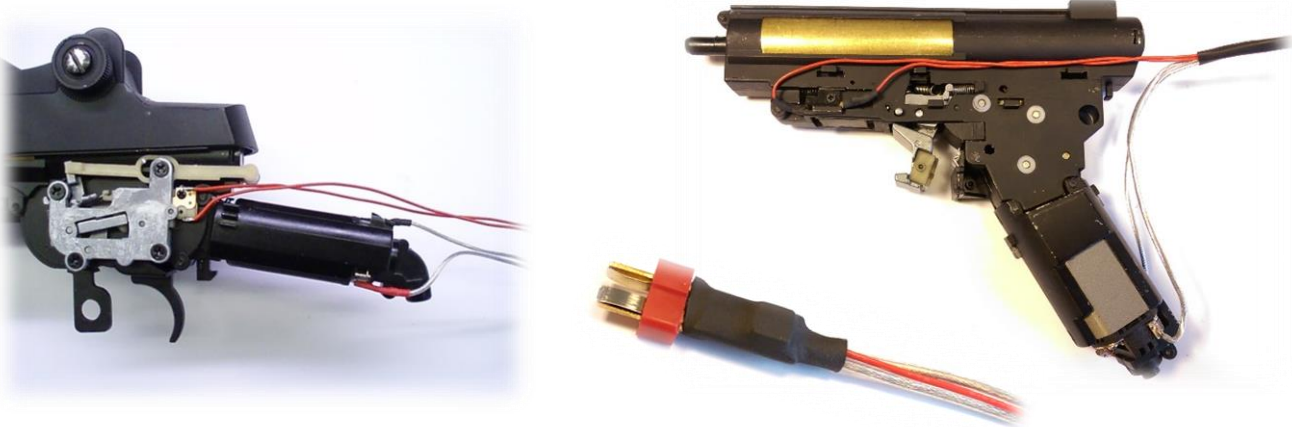
You are now ready to assemble you AEG and enjoy the benefits of an electronic switch device.

How to install the ASG – SMD Mosfet unit

Can be used with any AEG and combined with the extremely small size the installing possibilities are endless. Following are a couple of samples and tips. + + + + +

Installing in different version gearbox:

Some AEGs can be modified without opening the actual gearbox. Here is a sample from a Steyr AUG and M14. Original wires has been removed and the Mosfet units wires directly attached. Also shown is a Mosfet soldered directly to an Ultra T-plug.



Optimizing performance:

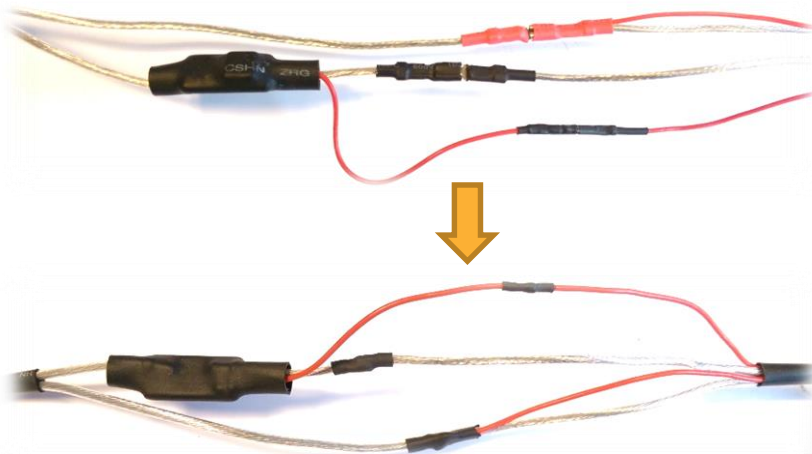
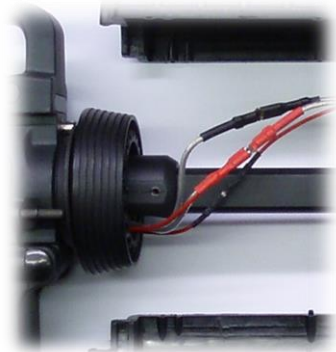
It is all about resistance in the line from battery to the motor, which makes a difference in performance. You can improve performance by removing resistance points in your AEG.

1. Replace standard battery plugs with the gold plated 'Ultra T-plugs' (ASG stock no. 17296). The resistance is many times smaller and does not get bend or corroded as the commonly used 'mini Tamiya plug' does. Remember you will need plug for each battery and for your charger as well.



2. The Mosfet units wires comes fitted with small plugs that allows easy installation when there is need for guiding them thru receiver parts or similar. Here shown on a standard M15A4.

These plugs are convenient but also a resistance factor. Removing them and soldering the wires directly together will give you additional performance. (the small switch wire does not affect performance with or without plug).



PLEASE NOTE!

As with any electronic switch device, always remember to disconnect battery immediately after use.

Litium batteries will be destroyed if left connected for a longer period.